

M Display Test Program

Program for Testing and Becoming Familiar
with the M Display

User's Manual

2013-08-27

"Everything for Embedded Control"

COMFILE
TECHNOLOGY

Comfile Technology Inc.

www.cubloc.com

Copyright 1996,2011 Comfile Technology

Table of Contents

Introduction.....3

System Requirements.....3

Description.....3

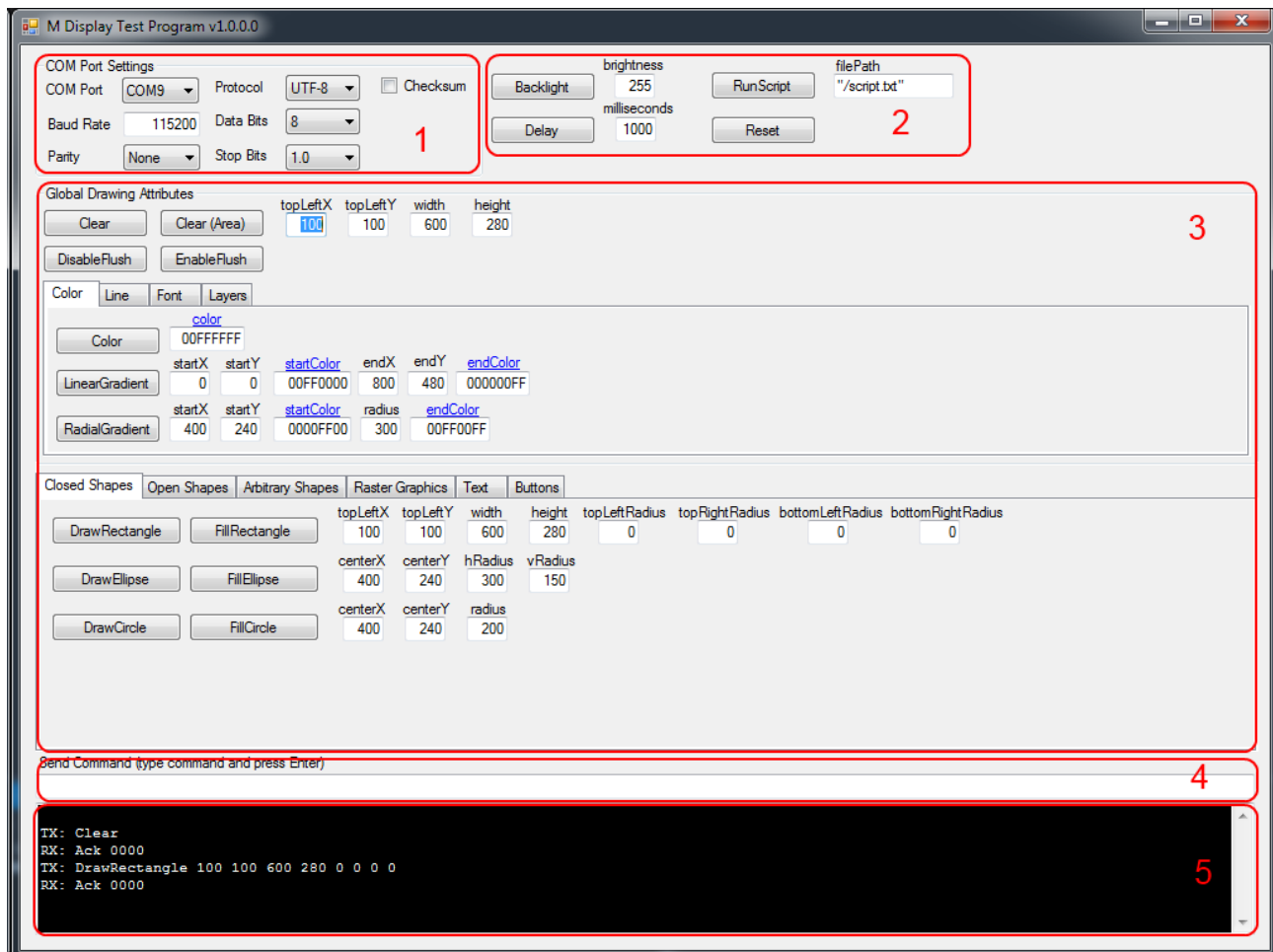
Introduction

The M Display Test program provides a graphical user interface to M Display users for testing and becoming familiar with the M Display.

System Requirements

- Windows XP, Vista, 7 or 8
- .Net Framework 4.0

Description



1. Communication and Protocol Settings - Enter the serial port and protocol settings to communicate with the M Display.
2. Auxiliary Commands - Enter parameters into the text boxes and then press the corresponding button to issue the command.
3. Graphics Commands - Enter parameters into the text boxes and then press the corresponding button to issue the command.
4. Type a command directly and press enter to send it to the M Display.
5. Output window - Shows the transmission and receipt of data sent to and from the M Display.